

Diwali

L E I C E S T E R 2 0 1 8



Leicester
visitleicester.info

Think India. Think Jet Airways.

Starting 5th November, fly non-stop from Manchester to Mumbai, 5 times a week and experience the grandeur of Diwali in India.

When you fly Jet Airways you can choose between Première and Economy seating, indulge in hot gourmet meals, enjoy our enhanced connectivity and experience our warm Indian hospitality.

To book, visit jetairways.com | [mobile app](#) | contact your [travel agent](#)



#JoyOfFlying

Happy Diwali



Diwali is one of the most important and prestigious festivals in Leicester's cultural calendar. It is a central attraction of our festival programme and continues to grow annually.

It is with great pride that we host one of the largest Diwali celebrations outside of India. As one of the most culturally diverse cities in the country, Diwali allows people from many cultures in Leicester to be together in friendship. It also serves as a wonderful time for family and friends to celebrate.

We would like to express our gratitude to all of those who work tirelessly to ensure that Diwali is such a success, particularly the Leicester Hindu Festival Council, along with Curve, the Diwali Advisory Panel, local ward councillors and all of the city council departments involved.

It again gives us huge pleasure to join in these great celebrations and wish you all a very happy and peaceful Diwali.

Sir Peter Soulsby
City Mayor

Piara Singh Clair MBE
Deputy City Mayor

Five Great Venues at Leicester Racecourse

*Club Suite*

Up to 120 seated inc balcony view

*The Nelson Suite*

Up to 250 seated inc balcony views

*The Pavillion*

Up to 180 seated

*The Kube*

Up to 500 seated

*Exhibition Hall*

Up to 300 seated



Available for hire at Leicester Racecourse set in 200 acres overlooking beautiful and tranquil setting that provides a unique backdrop for your Weddings, Pre-Wedding, Engagements, Birthdays, Anniversaries, Christening, Graduation and any other special occasions.

- Five great venues all providing a unique setting for your event
- Civil ceremony licence
- Fully licensed bars
- Fireworks
- Helicopter Pad
- Free car park for up to 2,000 cars

From venue hire to a complete party package, including decor, catering, staff, cake and much more. contact our events manager.

Exclusive rates for 2019 bookings, call us now.

t: 0116 271 6515

e: conference@leicester-racecourse.com

w: www.leicester-racecourse.com



Leicester Racecourse



@LeicesterRaces



Leicester Racecourse



Leicester Racecourse



Contents

Happy Diwali 3

Diwali in Leicester 6 - 7

Leicester's Diwali Celebrations 8 - 9

What's On 11 - 25

Map of Firework Display 26 - 27

Food 28 - 31

Shopping 33 - 36

Staying in the City 37 - 40

Road Closures 44 - 45

Travel into Leicester 48 - 49

For further information on Diwali in Leicester:

W: visitleicester.info

E: info@visitleicester.info

T: 0116 299 4444



Diwali in Leicester

Leicester's celebration of Diwali is one of the biggest outside of India. Whether it's to enjoy dance, fireworks, food or fashion - come and celebrate Diwali with us!

The festival kicks off with our famous lights switch-on on **Sunday 28 October** and culminates with a glorious fireworks display and entertainment on Diwali Day **Wednesday 7 November**. We also have a fantastic selection of events taking place around the city during the fortnight and we welcome you to join us in Leicester.

What is Diwali?

Diwali is an ancient festival celebrated by **Hindus, Sikhs and Jains** all over the world. It represents the universal messages of good over evil, of truth over falsehood and of light shining in the dark of the year. It is traditionally a time for exchanging gifts, friendship, peace, and goodwill to all.

For Hindus, Diwali represents the start of the New Year. It honours the victory of good over evil, and brightness over darkness.

It also marks the start of winter. Diwali honours **Lord Rama** and his wife **Sita** returning to their kingdom of Ayodhya,

following Rama and **Hanuman's** victory over the demon King Ravana and rescue of Sita from his evil clutches.

Each day leading up to Diwali has a different meaning and these also vary between regions or communities.

The first day marks the start of Diwali. It is dedicated to the worship of the **Goddess Lakshmi** who provides prosperity.

On the second, there is a focus on abolishing evil and the **Goddess Kali** is worshipped.

On the third, Diwali day, clay lamps (called divas) and candles are lit in temples and houses, and fireworks are let off, giving Diwali its name of **Festival of Lights**. People also clean and decorate their homes with Rangoli (traditional colourful folk patterns), buy new clothes, and give each other gifts and sweets.

On the fourth, it is the start of the New Year (**Nutan Varsh**) and businesses traditionally open new accounts.

The fifth day is important to Hindus as it celebrates the relationship between brothers and sisters.



People seek blessings at Diwali from **Lakshmi**, the goddess of wealth and prosperity, and **Lord Ganesha**, the remover of obstacles.

For Sikhs, Diwali celebrates the release of the sixth guru, **Guru Hargobind Ji**, and 52 Hindu Rajas (kings) from imprisonment. Guru Hargobind Ji was held for 40 days at the Gwalior Fortress along with the Rajas, who had been deprived of their kingdoms and were badly treated. When the time came for the Guru's release, he refused to leave unless the Rajas were also set free.

The condition imposed on him was that only those Rajas that could hold onto the Guru's robe would be set free. Guru Hargobind Ji had a special robe made with 52 khalia (tapers) so that each of the Rajas could walk free with him. He was then given the name '**Bandhi Chhor'**', the deliverer of prisoners.

In India, Sikhs celebrate by lighting candles and divas (clay lamps) in houses and on the Sarowar - the sacred water which surrounds the Golden Temple, Amritsar. Sikhs in Leicester celebrate in Gurdwaras (temples).



For Jains, followers of one of India's most ancient religions, Diwali marks the anniversary of the attainment of **Moksha**, the final liberation of the soul from the cycle of death and rebirth, by **Lord Mahavir**. On this day, Jains celebrate this permanent happiness of the soul and remember Lord Mahavir's last sermon, which was given on Diwali day, before his soul left his body and was liberated.



LEICESTER CITY

OFFICIAL MERCHANDISE AT JC SPORTS


73 Market Place, Leicester LE1 5EN
Tel: 0116 262 1381 www.jcsportsdirect.com

Diwali Greetings
to all our customers



Great value printing, any name and number on any shirt • Only 100 yards from Clock Tower




Custom Invitations & Address Stationery for All Special Occasions

WWW.RANITI.COM

CUSTOMIZE & DESIGN YOUR OWN WEDDING INVITATION CARD WITH A COMPLETE RANGE OF MATCHING ACCESSORIES FOR YOUR SPECIAL OCCASION



May the light of Diya guide you towards happiness and joy in life.

Happy Diwali!

BOOK YOUR FREE ONE TO ONE CONSULTATION TODAY TO CREATE YOUR DESIGNER INVITATION!

[/invitationsbyraniti](https://www.raniti.com)
[/invitationsbyraniti](https://www.raniti.com)

Based in Leicester
Website: www.raniti.com
UK Email: jweillyn@raniti.com
UK Mobile: 0751 517 8485

★ FREE ENVELOPE STICKERS AND CLEAR ENVELOPES FOR ALL DESIGNER INVITATIONS. ★

Leicester's Diwali Celebrations

Diwali Lights Switch On

Sunday 28 October 3pm – 9pm
Belgrave Road main stage from 5.30pm
Cossington Street Recreation Ground stage programme from 4pm

Diwali Day

Wednesday 7 November 3pm – 9pm
Cossington Street Recreation Ground stage programme from 6pm

This year, Leicester's world famous Diwali celebrations promise to be more spectacular and dazzling than ever, with the return of the Diwali Village on Cossington Street Recreation Ground and an aerial firework display above Belgrave Road.

Everyone will be welcomed to join in the festivities which will begin with the illumination of the Diwali lights along Belgrave Road, on Leicester's 'Golden Mile', on Sunday 28 October. Up to 40,000 people will watch the lights switch on, which follows a vibrant programme of music and dance on the Belgrave Road stage presented by the



Leicester Hindu Festival Council, Leicester City Council and supported by Curve. The stage programme for Diwali Switch On will run 5.30pm – 8pm on Belgrave Road with the lights turned on at 7.30pm followed by the fireworks, which this year can be viewed from Belgrave Road. The Golden Mile will be bathed in light throughout the festive period until Diwali Day, when the celebrations continue with the stage on Cossington Street Recreation Ground.



The Diwali Village on Cossington Street Recreation Ground will feature a full stage programme showcasing local talent, children's fun-fair rides and stalls including food and concessions running from 3pm to 9pm.

On Diwali Day, the Diwali Village will again be on Cossington Street Recreation ground along with a full stage programme of entertainment, presented by the Leicester Hindu Festival Council.

Fireworks have always been a traditional part of Diwali celebrations and on Diwali Day the fireworks can be viewed from Belgrave Road and the surrounding area. Leicester's Diwali display is created and choreographed by local company Bright Spark Fireworks Ltd who have embraced traditional elements

mixed with the latest computer designed pyrotechnics and fireworks. Watch aerial fireworks exploding hundreds of feet above, combined with pyrotechnics at different heights forming layers of spectacular colour and sound which highlights the tradition of light and colour during this wonderful festival.

This year Leicester's Wheel of Light returns. The big wheel will be located on Belgrave Road from 26 October until 11 November.



George's
HAIRDRESSING

Inspiring the ladies and gents
of Leicestershire for 45 years.
Find us on Allandale Rd,
Granby St & in Oadby.

0116 285 8282
www.georgeshairdressing.com



#LondonRdHair

From gin & prosecco in our Honesty
Bar to lounging in our #BeSocial
area... a new salon experience
awaits at 157 London Rd, LE2 1EG.

0116 285 1699
www.londonrdhair.co.uk

George's HAIRDRESSING #LondonRdHair

**As a Diwali treat, you can
get 50% off a cut & colour!**

Simply bring this voucher
to your preferred salon

Offer valid for bookings in October & November 2018. Selected
stylists only. A skin test is required 48hrs prior to your colour
appointment. The offer can not be used in conjunction with any other
offer. George's Hairdressing/London Rd Hair have the right
to amend these terms and conditions at any time.

CELFONE

Happy Diwali

From all at Celfone Trading

Visit us in store to take advantage of our SIM
Only International Call Rates

O₂ O₂ O₂ O₂ O₂

Beaumont Leys | Thurmaston | Market Harborough | Loughborough | Hinckley

f  celfone.uk.com O₂

Telefonica

India is just 2p away

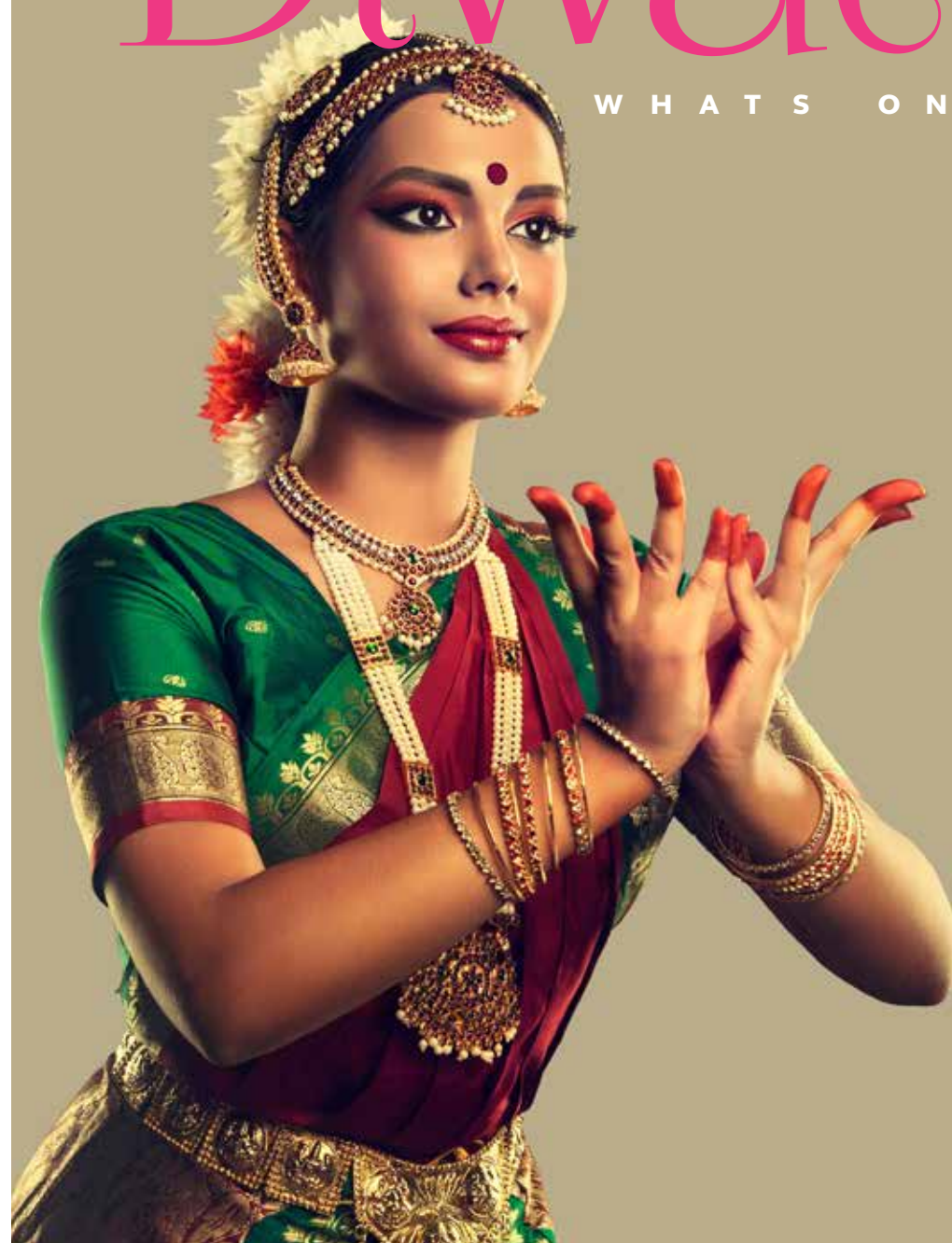
Pick up your International Sim at your local O₂ shop,
or call our O₂ Business Centre Leicester Beaumont
on 0116 326 1010 to find out more.



Minimum top-up £10. Prices correct as of 26 September 2018. UK calls to landlines. Terms apply, see o2.co.uk

Diwali

W H A T S O N



For details of more events and activities go to visitleicester.info or follow us on:

- f leicesterfestivals
 t leicesterfest #diwalleicester
 i leicesterfest

Family Rangoli Workshops

Tuesday 23 October
 1pm – 3pm & 3.30pm – 5.30pm
 Belgrave Neighbourhood Centre
 W: leicester-mela.co.uk
 Take part this half term in a participatory family Rangoli activity. Share your skills while learning new ones and meet the artist behind the spectacular Diwali Rangoli exhibitions. Rangoli art contains intricate, bright, colourful, symmetrical designs, traditionally created outside on doorsteps at Diwali time using authentic techniques and traditional materials. The art of Rangoli can be passed down to children, adults and families of all ages who in turn can keep the ancient tradition alive. Free family drop in – 30 minute sessions. Suitable for ages 5+

Diwali Storytelling at Rushey Mead Library

Tuesday 23 October
 2pm – 3.30pm
 Rushey Mead Library
 T: 0116 266 5112
 Be transported by words and your imagination in to a world of light and celebration through Diwali stories shared together.

Diwali Storytelling at Belgrave Library

Thursday 25 October
 2pm – 3.30pm
 Belgrave Library
 T: 0116 299 5500
 Be transported by words and your imagination in to a world of light and celebration through Diwali stories shared together.

Diwali Wheel of Light

Friday 26 October – Sunday 11 November
 Belgrave Road
 W: visitleicester.info
 After last year's success the 110-foot Ferris wheel is returning to the Diwali celebrations this year. Leicester's Wheel of Light arrives at Belgrave Road through to the end of Diwali. The wheel will be lit at night to provide a glittering centrepiece to the festivities. Opening times and ticket prices will be available online.

Curve & An Indian Summer Festival's Diwali Family Day

Saturday 27 October
 11am – 3pm
 Curve Theatre
 T: 0116 242 3560
 W: curveonline.co.uk
 Join Curve in association with An Indian Summer Festival for a day packed with fun family activity. Free events include performances on the foyer stage from House of Verse, sitar music in the café, dressing up, shadow puppets and other craft activities, a mehndi artist and backstage tours. Come and see a brand new Little Curve show: Hanuman Moves a Mountain & Attempts To Eat The Sun, suitable for children 4+ and their families. All activity is free, some may be bookable in advance via the Curve website: curveonline.co.uk

Yuva Nartan

Saturday 27 October
 7pm – 9.30pm
 Curve Theatre
 Ticket Office: 0116 242 3595
 W: curveonline.co.uk / nupurarts.org.uk
 An exciting evening of vibrant Indian classical dance and music presented as part of Curve Theatre's Inside Out Festival, featuring dance and music artists from the region and across the UK.
 Tickets: £11 (Concessions for under 26 years and over 60s 15% off for Curve Members)



Supported using public funding by
**ARTS COUNCIL
 ENGLAND**

CURVE

Irving Berlin's
White Christmas
 THE MUSICAL

6 DEC 2018
 – 13 JAN 2019

MADE AT CURVE IN ASSOCIATION WITH JAMIE WELSH
 IRVING BERLIN'S **WHITE CHRISTMAS**
 BASED UPON THE PARAMOUNT PICTURES FILM WRITTEN FOR THE SCREEN BY NORMAN KRASNA, NORMAN PANAMA AND MELVIN FRANK
 MUSIC AND LYRICS BY IRVING BERLIN BOOK BY DAVID IVES AND PAUL BLAKE
 ORIGINAL STAGE PRODUCTION DIRECTED BY WALTER BOBBIE PRODUCED BY SPECIAL ARRANGEMENT WITH PARS THEATRICALS EUROPE
 BY WICKELAI FOSTER COSTUME DESIGNER STEPHEN MEAD
 DIRECTOR OF MUSIC MICHAEL TAYLOR COSTUME DESIGNER MARK HENDERSON PRODUCTION DESIGNER TONY MARSHALL EXECUTIVE PRODUCERS LARRY BLANK JONATHAN BRUCE PRODUCED BY JACOB CARO

The gift of theatre

8 DEC 2018 – 12 JAN 2019



DR. SEUSS' THE CAT IN THE HAT
 BASED ON THE BOOK BY DR. SEUSS
 PLAY ORIGINALLY PRODUCED BY THE NATIONAL THEATRE OF GREAT BRITAIN
 ADAPTED AND ORIGINALLY DIRECTED BY KATH MITCHELL
 BY ARRANGEMENT WITH JOSEF WEINBERGER LIMITED ON BEHALF OF MUSIC THEATRE INTERNATIONAL OF NEW YORK
 DR. SEUSS PROPERTIES TM & © 2018 DR. SEUSS ENTERPRISES, L.P. ALL RIGHTS RESERVED

IN ASSOCIATION
 WITH THE NATIONAL CENTRE
 FOR CIRCUS ARTS

By **Dr. Seuss**

Directed by **Suba Das**
 Designed by **Isla Shaw**

TICKETS 0116 242 3595
WWW.CURVEONLINE.CO.UK
CURVE THEATRE, LEICESTER



Supported using public funding by
**ARTS COUNCIL
 ENGLAND**





Museum of the Moon

Sunday 28 October – Wednesday 7 November
Belgrave Neighbourhood Centre
Opening Sunday 28 October 4pm – 9pm
Other viewing times are Tuesday 30 – Tuesday
6 November from 4pm – 8pm (excluding
Sunday 4 November) and Wednesday 7
November 3pm – 9pm

As part of this year's Diwali Leicester celebrations an art installation featuring a 7 metre diameter model of the Moon, by Luke Jerram, will be placed in Belgrave Neighbourhood Centre.

The Museum of the Moon features 120dpi detailed NASA imagery of the lunar surface. At an approximate scale of 1:500,000, each centimetre of the internally lit spherical sculpture represents 5km of the moon's surface.

Since its debut in August 2016, the Museum of the Moon has been presented in a number of different ways both indoors and outdoors. As it travels from place to place, it gathers an ongoing collection of personal responses, stories and mythologies, as well as highlighting the latest Moon science

Space will also be made available for personal reflection and prayers.



Museum of the Moon Events at Belgrave Neighbourhood Centre

Rangoli Exhibition - Under the Moonlight!

Sunday 28 October & Wednesday 7 November
4pm – 8.30pm

Inspired by the moon, reflections and stillness the award winning team behind the annual Diwali Rangoli exhibitions present a mixture of breathtakingly modern and traditional Rangoli styles, themed around water and nature, presented under a life size installation of the moon. Be inspired by this once forgotten folk art as artists transform it in to a visually stunning exhibition. Free drop in event. Suitable for all ages.

Diwali Moon Family Day

Saturday 3 November

11am – 3pm

Enjoy an unbelievably close up view of the Museum of the Moon and share in a range of inspiring, informative and creative activities. Workshop demos on the Moon and Meteorites, including the chance to hold space rocks from the National Space Centre plus storytelling and crafts from Neighbourhood Services. Free family drop in.

Diwali Moon Family Meditation

Sunday 4 November

12noon – 3pm

T: 0116 222 1004

A chance to experience harmony and wellbeing from the peace of space as a family under the Museum of the Moon installation through guided meditation and yoga. Free family event. Booking essential.

Pinnacle
Chartered Certified Accountants & Registered Auditors
trusted • caring • professional

32 De Montfort Street
Leicester LE1 7GD
Tel: 0116 254 4316

Dedicated to delivering
a first class client service.



Wishing you all a very

*Happy
Diwali*

E: info@pinnacleaccountants.co.uk
W: www.pinnacleaccountants.co.uk

**RA
EVENTS**

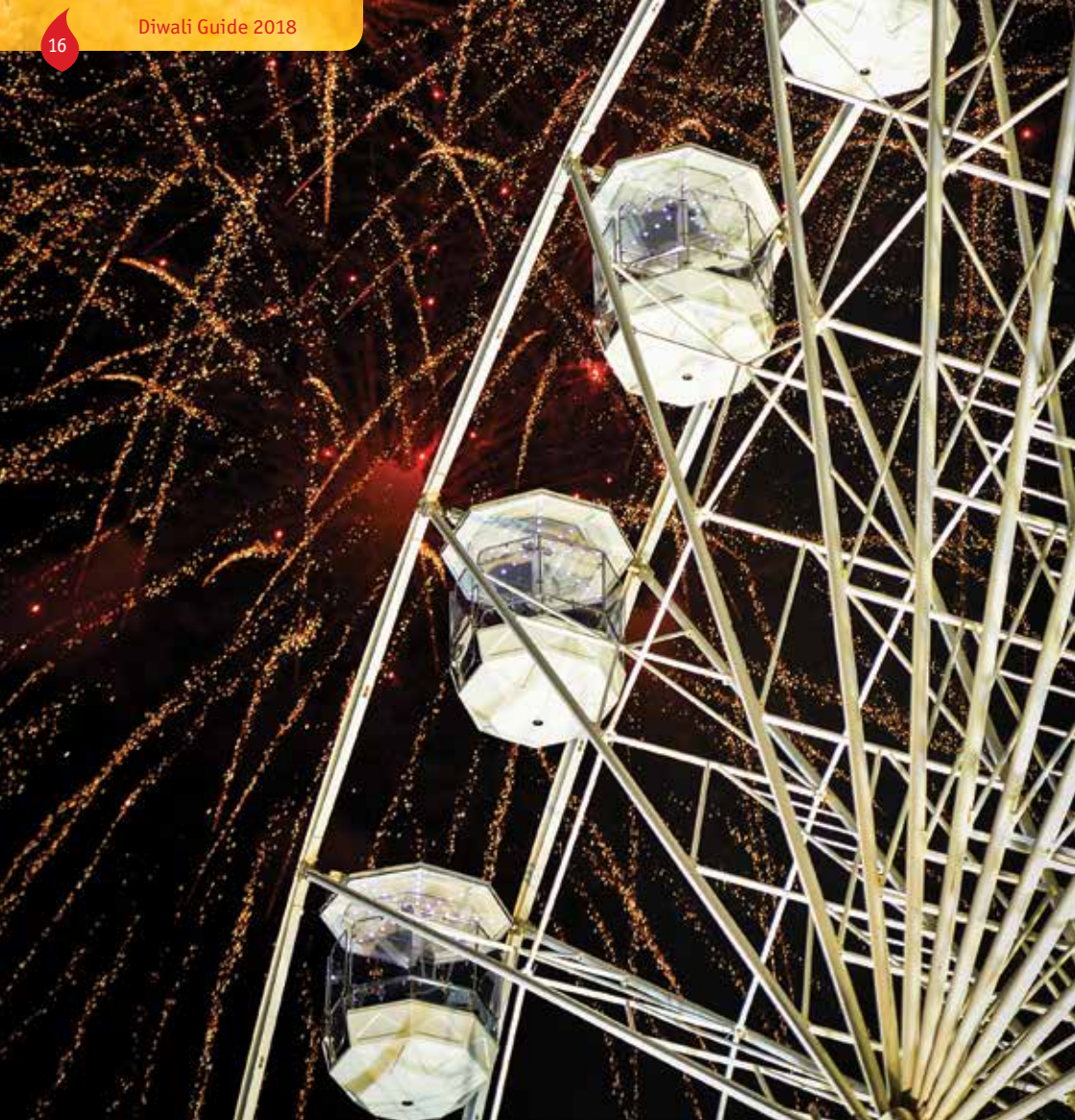


07871 477726

- Event bar hire
- Price match guarantee
- Large volume specialist
- Range of bars available
- Pre Weddings, Weddings & Events

Info@r-a-Events.co.uk





Diwali Lights Switch On

Sunday 28 October
Diwali Lights Switch On 5.30pm – 9pm
Main stage 5.30pm – 8pm
Belgrave Road

Diwali Village 3pm – 9pm
Stage 3pm – 8.30pm
Cossington Street Recreation Ground

Celebrate Diwali Leicester with the illumination of the Diwali lights along Belgrave Road featuring a traditional music and dance programme on the main stage, Diwali Village, annual Mela Rangoli exhibition, Museum of the Moon at Belgrave Neighbourhood Centre and firework finale.

The highlight of the main stage at 7pm will see dancers from across the city coming together to create a brand new dance performance set on the streets of Mumbai. Inspired by Curve's recent work in Mumbai and featuring choreography by Leicester's internationally acclaimed dance sensation Aakash Odedra and Curve Dance Associate Melanie Knott, the performance combines new contemporary dance and a flavour of Bollywood, featuring the hit Shakalaka Baby from Andrew Lloyd Webber's Bombay Dreams.

Visit the famous Diwali Village in Cossington Street Recreation Ground, open from 3pm – 9pm. The Village will be packed to

the brim with fashion, jewellery, arts, crafts, henna and community information as well as children's funfair, freebies and giveaways. Plus don't miss the huge variety of tantalising traditional Indian snacks, delicious curries and drinks from across the Indian subcontinent. Take part in the circus skills workshop from 3pm – 4.30pm and experience the magnificent light and fire show, Lantern Glow at 7pm and 8.30pm.

The Diwali community stage will dazzle you with dances and music to get you in the party mood. Watch dancers, singers and artists from across the region showcase their talents along with performances from local schools, dance academies and performing art groups.

Take a ride on Leicester's Wheel of Light, lighting up the streets at night with its 110-foot illuminous Ferris wheel providing a birds-eye view of the spectacular lights along Belgrave Road.

And finally the Diwali Light Switch On would not be the same without the spectacular aerial firework display which can be seen above Leicester's Golden Mile and the surrounding area from 7.30pm.

Wishing you a Happy Diwali
Legal support for business, for you, for life

Kally Singh | Litigation | 01733 295 642
Pavinder Khela | Family | 01780 750 956

Gema Maisuria | Conveyancing | 01572 725 764
Abigail Mehta | Wills & Probate | 01733 295 557



www.hegarty.co.uk

 **Hegarty Solicitors**
Peterborough • Stamford • Oakham

Diwali Dinner and Dance

Saturday 27 October

7pm until late

Peepul Enterprise

T: 07792 360 402

Celebrate Diwali with dinner, entertainment and music with DJ Mani Beats. Tickets: £22 each.

Diwali Fashion Show

Sunday 28 October

3pm – 4pm

New Walk Museum and Art Gallery

T: 0116 225 4900

Join us for a vibrant fashion event, showcasing an exquisite collection of sarees, lenghas, shervanis and chaniya-choris for the family to wear at Diwali. Free entry. Advance booking recommended.

The Great Diabetes Walk in support of the Leicester Diabetes Village

Sunday 28 October

4.30pm

Start at Shreeji Dham Haveli Temple

504 Melton Road to Cossington Street Recreation Ground.

For further information and to register email: stardiabetes@gmail.com

Garland and Toran Making

Friday 2 November

4pm – 6.30pm

Shreeji Dham Haveli, 504 Melton Road

T: 0116 212 2827

Learn the skills of making garlands and torans from fresh flowers. Please bring a bunch of roses or seasonal flowers with you.

Giant Puppet Performance and Parade

Friday 2 November

5pm – 5.15pm

City Centre

W: indiansummer.org.uk

A surprising twist on the story of Diwali re-imagining characters, Hanuman and Ravana as 10ft puppets that tower above a dance battle as two armies collide. Join us in a procession of dancers, drummers and stilt walkers. Led by the giant puppets, opposing armies of monkeys and demons come together and collide in a captivating performance.

Supported using public funding by
**ARTS COUNCIL
ENGLAND****Diwali Mela Bazaar**

Saturday 3 November

10am – 5pm

Humberstone Gate & Clock Tower

W: visitleicester.info

Leicester City Council in partnership with Leicester Belgrave Mela and Sabras Radio brings you a flavour of Diwali celebrations to the city centre. Experience a feast of Indian shopping, arts & crafts and live entertainment from Sabras Roadshow. Plus food, dance, fashion, music and culture.

Diwali Activities Family Fun Day

Saturday 3 November

11am – 3pm

New Walk Museum and Art Gallery

T: 0116 225 4900

Enjoy Diwali stories and free activities including Indian dancing, handling traditional Diwali objects, decorating torans and creating Rangoli designs. Come in your best Indian outfit or dress up in one of ours.

Out with the Old and in with the New

Saturday 3 November

6.30pm – 9pm

New Walk Museum & Art Gallery

W: ochs.org.uk

A talk by Anuradha Dooney of the Oxford Centre for Hindu Studies (OCHS).

Diwali, the Festival of Lights, is celebrated all over the world today with fireworks, lighting of lamps, gift-giving and feasting. It is a time of looking forward and renewal. This talk revisits the rich legacy of ideas and teachings from the tales of Rama, Sita, Krishna, Lakshmi, Ganesha and Kali and proposes that what is old, when retold, creates the new.

Music & Light

Saturday 3 November

7pm – 8.30pm

Leicester Cathedral

W: leicestercathedral.org

Experience the moods and melodies of Indian classical music and pay homage to its spiritual depth and universal message in the stunning setting of Leicester Cathedral.

Presented by Sitar Music Society in partnership with Leicester Cathedral. Tickets: £10 / £8 Booking link: eventbrite.co.uk/e/music-and-light-a-concert-of-indian-classical-music-tickets-48453202834**Rangoli Competition**

Sunday 4 November

10.30am – 1pm

Shree Sanatan Mandir

T: 0116 266 1402

The Rangoli competition is open to all to enter and is judged in different categories so that children and adults can take part. Prizes will be awarded to the winners and the Rangolis will be displayed during the Diwali period for the hundreds of visitors to the Temple to see. Competition rules are available from the Mandir office.

A Unique Rangoli

Sat 3 November to Tuesday 6 November

11am – 4.30pm

Highcross Leicester

T: 0116 242 8644

View this unique Rangoli installation at the Highcross Shopping Centre where the artist will be creating a Rangoli with a difference. Traditionally Rangoli designs are simple geometric shapes, deity impressions, or they depict nature. However here you will see the Rangoli art form expressing a unique message of our times.

*Wishing you a very
Happy Diwali***Time is precious, which is**

Whether for business or pleasure, we can accommodate your requirements with minimum fuss and maximum efficiency.

With a first class fleet of vehicles combined with highly qualified drivers, mechanics and administrative staff, using Woods Coaches for coach hire gives you total peace of mind.

why we make coach hire easy.**The coaches we have available are:**

- VIP Premier Executive
- 16 and 19-seater mini-coach
- 30 Seater midi-coach
- Premier Executive 50
- 53 and 57-seaters
- Wheelchair Accessible Coach

**For a free, no obligation quote, CALL TODAY!
0116 278 6374 or visit www.woodscoachhire.co.uk**

DE MONTFORT HALL
LEICESTER

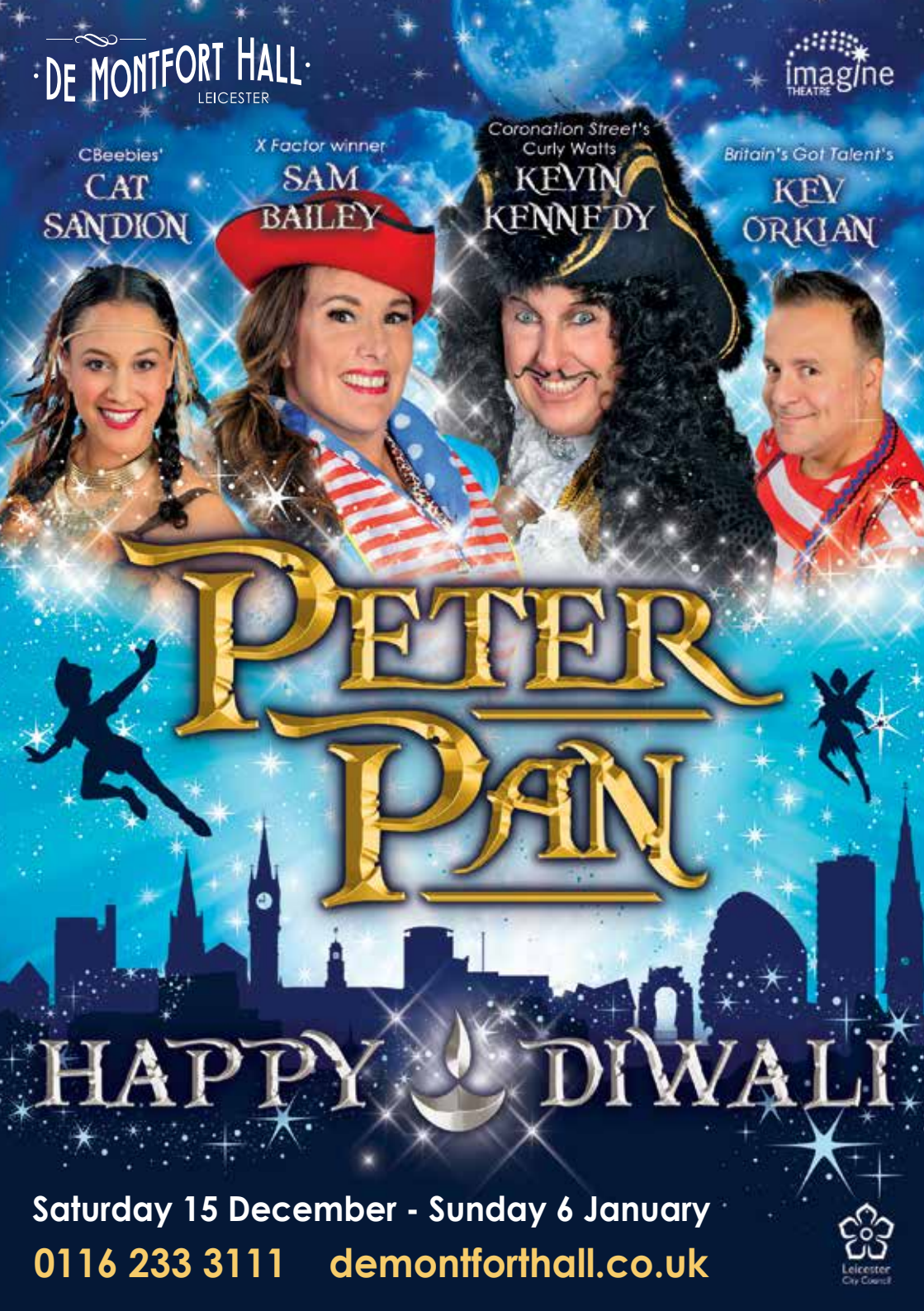
imagine
THEATRE

CBeebies'
CAT
SANDION

X Factor winner
SAM
BAILEY

Coronation Street's
Curly Watts
KEVIN
KENNEDY

Britain's Got Talent's
KEY
ORKIAN



Saturday 15 December - Sunday 6 January

0116 233 3111 demontforthall.co.uk



Why Choose a Career in Construction with Barratt Developments?

Build your career with us



BARRATT
DEVELOPMENTS PLC

Many of our Managers and Directors started as apprentices or trainees, so if like them, you want to progress, Barratt Developments could be the place for you.

Whether you are looking for a career in construction, sales or finance or if engineering or architectural design is more your thing, we have opportunities to match your skills across the Midlands which all offer excellent benefit packages and salary opportunities.

We understand the importance of providing each and every one of our employees with the opportunity to develop their skills and achieve their ambitions. That's why everyone within the Barratt Group, without exception, has access to learning and development, and is actively encouraged to fulfil their potential to help them build a successful career with us.

We welcome fresh thinking and recognise talent when we see it. We are always looking for applications from our local community in the following areas.



- Engineers
- Architects
- Surveyors
- Sales Advisers
- Technical/Design
- Land/Planning
- Finance
- IT
- Apprenticeships
- Graduate Programmes
- Internships

Nirali Patel, Head of Finance at BDW Cambridgeshire

I believe Barratt Developments encourages diversity at every stage of an employee's journey, having started just 3 years ago as a Regional Accountant to now the Head of Finance for a new divisional office, Barratt has helped me to develop and reach my potential. Diversity is an important constituent of any good workplace as it helps with employee engagement, creativity and brings a variety of different backgrounds, experiences and perspectives.



Find your new career at www.buildingcareerstogether.co.uk



BARRATT
HOMES



DAVID WILSON HOMES
WHERE QUALITY LIVES



Wilson Bowden
Developments



We wish our local community a very Happy Diwali

Diwali Day

Wednesday 7 November
3pm – 9pm, stage programme from 6pm
Cossington Street Recreation Ground
W: visitleicester.info

The Golden Mile will be bathed in light throughout the festive period until Diwali Day, when the celebrations continue at Cossington Street Recreation Ground with entertainment, children's funfair, food and craft stalls. There will also be an aerial firework display over Belgrave Road and the surrounding area.



Lighting up Limekiln Lock

Wednesday 7 November
6pm – 9pm
Limekiln Lock, off Abbey Park Road, LE1 3WA
W: canalrivertrust.org.uk
Experience your local waterway in a new light as Limekiln Lock is transformed with illuminations. Come along to our stall at the switch on event on Sunday 28 October at Cossington Recreation Ground to make your own boat, then visit the canal on Diwali Day to see it afloat.

Cultural Variety Show

Saturday 10 November
3pm – 4pm
New Walk Museum and Art Gallery
T: 0116 225 4900
Bring the family down to see a vibrant

Diwali cultural show consisting of Indian folk dancing and semi classical dance performances by children and young people. You can also learn some dance moves and join in some Bollywood dance.

Igniting Minds and Illuminating Hearts

Saturday 10 November
6pm – 8pm
Harmony House, 122 Ross Walk
T: 0116 216 8430
Speaker: Sister Jayanti, European Director of the Brahma Kumaris and NGO Representative to the United Nations, Geneva.
The Festival of Lights celebrates the return to a time of happiness and harmony. It is symbolic of the light that shines within all of us. Join us for an evening of experience, entertainment and enlightenment.



Portrait Rangoli by
Milan Arvind Kumar:
Mela Rangoli exhibition 2017

Rangoli: An Art Form

Rangoli is an art form, originating in the Indian subcontinent, in which patterns are created on the floor or the ground using materials such as coloured rice, dry flour, coloured sand or flower petals. It is usually made during Diwali, festivals and celebrations in the Indian subcontinent. Designs are passed from one generation to the next, keeping both the art form and the tradition alive.

The purpose of Rangoli is decoration, and it is thought to bring good luck. Design depictions may also vary as they reflect traditions, folklore, and practices that are unique to each area. It is traditionally done

by family members. Generally, this practice is showcased during occasions such as festivals, auspicious occasions, marriage celebrations and other similar milestones and gatherings.

Rangoli designs can be simple geometric shapes, deity impressions or flower and petal shapes (appropriate for the given celebrations), but they can also be very elaborate designs crafted by individuals or numerous people together. The traditional base material is usually dry powdered rice or dry flour, to which sindoor (vermilion), haldi (turmeric) and other natural colours can be added. Other more modern materials now include coloured sand and stone, flowers and petals.

Diwali Greetings from Leicester Fostering and Adoption Centre
www.leicester.gov.uk/fostering
0116 454 4500

Leicester City Council

WYVERN RESTAURANT & SPORTS BAR
Kerrysdale Avenue, Rushey Mead, Leicester LE4 7GJ
Tel: 0116 3191380 Newly refurbished Mbl: 07377 177773

Leicesters hidden gem offering an array of mouth watering traditional indian dishes with a touch of our unique twist. Veg/non veg dishes.
Come & try our chefs specialities in a friendly and relaxed atmosphere. • Takeaways available upon request.
• Private party bookings welcome for up to 15-20. **Pints from £2.60.**

[wyvernrestaurantandsportsbar](https://www.facebook.com/wyvernrestaurantandsportsbar)
 [wyvernrestaurantbar](https://www.instagram.com/wyvernrestaurantbar)

Open 6 days a week
Tues-Thurs 4pm – 11pm
Fri-Sun 12noon – 11pm



Abbey Park Bonfire & Firework Display

Saturday 3 November

Be dazzled by Leicester's biggest bonfire & firework display at the city's official celebration! The fantastic fun takes place on Saturday 3 November from 5pm – 9pm on Leicester's Abbey Park and this year's theme is Saturday Night Fever.

The lighting of the bonfire and main display is always a spectacular sight – with a quieter firework show perfect for the younger audience. Watch the skies light up at this annual family event, with a programme of live entertainment, funfair and plenty of warming food stalls.

Savings of up to 40% can be made by purchasing your tickets in advance.

Advance tickets:

Adult £6 *

Concessions and Under 16's £4 *

Family £16 (two adults, two children)

Under 4s free

On the gate:

Adults £8 *

Concessions and Under 16's £5.50

(No family tickets available on the gate)

Tickets available from Visit Leicester, De Montfort Hall Box Office and online. For further information go to visitleicester.info

THE MELTON RESTAURANT

Come and enjoy a meal at our veg/ non veg restaurant:

- Seating capacity for up to 60 people
- Available for private hire, birthdays, family gatherings or any other special occasions.
- Mobile bar available for hire

Call now to reserve a table

Diwali Greetings



Afternoon Special

Tuesday to Sundays
12noon to 3pm
only £5.00

Curry with nan or rice

Pints from £2.40 all day

197 Melton Road, Leicester LE4 6QT. T: 0116 319 5170 M: 07479 717505 E: meltonrestaurant@gmail.com

happy diwali

Get faster broadband
**Superfast
Leicestershire**



openreach



Get better connected

Fibre broadband could help your business maximise growth, expand clientele and improve profits.

www.superfastleicestershire.org.uk/business


Superfast
Leicestershire is
supported by




Department for
Digital, Culture
Media & Sport



Recommended Viewing Sites

 The **green zones** show the best places to watch the Diwali firework displays

 The **red zones** will not provide a good view

Diwali Lights Switch On

Sunday 28 October, 5.30pm to 9.00pm

Diwali Fireworks display starts approx. 7.30pm
Village closes at 9.00pm

Diwali Day

Wednesday 7 November, 6.00pm to 8.30pm

Fireworks display starts approx. 8.10pm
Diwali Village closes at 9.00pm

Please note that times are approximate and Leicester City Council reserves the right to cancel fireworks display due to adverse weather conditions or safety reasons.



Food

A past winner of the Curry Capital of Britain award, Leicester has a mouth-watering range of Indian restaurants amongst other world cuisine. In Belgrave Road, the city centre, London Road, Narborough Road and beyond, Leicester has an amazing variety of restaurants to choose from. So why not combine your visit with a meal out to savour the city's offerings?

Here is a selection of restaurants offering South Asian cuisine in the city. This is not a comprehensive list and is not our personal recommendation. Details correct at the time of going to print. A further listing of world cuisine on offer in Leicester is available on our website: visitleicester.info

Apna Punjab Sweet Centre

65A Purley Road Leicester LE4 6PB
T: 0116 266 6567

Bobby's Restaurant (v)

154-156 Belgrave Road Leicester LE4 5AT
T: 0116 266 2448 / eatatbobbys.com

Café Delhi

47 Melton Road Leicester LE4 6PN
T: 0116 266 5500 / cafedelhi.co.uk

Chai Paani

87a Belgrave Road Leicester LE4 6AS
T: 0116 266 3004

Chef & Spice (buffet)

1 Andrewes Street (off Hinckley Rd)
Leicester LE3 5PG
T: 0116 242 2240 / chefandspice.co.uk

Chettinad Restaurant

146c London Road Leicester LE2 1ED
T: 0116 319 2112 / chettinadrestaurant.com

Chutney Ivy

41 Halford Street Leicester LE1 1TR
T: 0116 251 1889 / chutneyivy.com

Dakshin

150 Belgrave Road Leicester LE4 5AT
T: 0116 319 4200 / dakshin.co.uk

Everest Dine

61 Belgrave Gate Leicester LE1 3HR
T: 0116 251 0555 / everestdine.co.uk

Feast India (buffet)

411 Melton Road Leicester LE4 7PA
T: 0116 258 2590 / feastindia.co.uk

Flamingo Bar & Grill

183 Loughborough Road Leicester LE4 5LR
T: 0116 261 0109 / flamingobargrill.co.uk

Geetas Fast Food

20 Melton Rd Leicester LE4 5EA
T: 0116 266 9003

Herb Restaurant

96 Granby Street Leicester LE1 1DJ
T: 0116 233 2715 / herbrestaurant.co.uk

Heritage India

328-330 Welford Road Leicester LE2 6EH
T: 0116 244 8888 / heritage-india.co.uk

Indigo (v)

432 Melton Road Leicester LE4 7SN
T: 0116 261 1000 / indigos.co.uk

Jamal's Balti House

4 Narborough Road Leicester LE3 0BQ
T: 0116 254 4355

Kayal

153 Granby Street Leicester LE1 6FE
T: 0116 255 4667 / kayalrestaurant.com

Khyber

116 Melton Road Leicester LE4 5ED
T: 0116 266 4842 /
khybertandoorirestaurant.co.uk

Koyla – The Chargrill

Kapital Building Leicester LE1 3UD
T: 0116 262 8710 / koyla.co.uk

Lilu Fine Dining

76 Highcross Street Leicester LE1 4NN
T: 0116 262 3119 / lilurestaurant.co.uk

Melton Restaurant

197 Melton Road Leicester LE4 6QT
M: 07479 717505 / meltonrestaurant.co.uk

Mithaas (v)

103-105 Narborough Road Leicester LE3 0PA
T: 0116 254 1588 / mithaas.co.uk

Mirch Masala (v)

160 Belgrave Road Leicester LE4 5AU
T: 0116 261 0888 / mirch-masala.co.uk

More Restaurant (buffet)

62 London Road Leicester LE2 0QD
T: 0116 225 0000 / morerestaurant.co.uk

Mumbai Inn

73 London Road Leicester LE1 7GE
T: 0116 247 0420 / mumbaiinn.co.uk

Nawaaz Indian Restaurant

159 London Road Leicester LE2 1EG
T: 0116 319 5885



Paddy's Marten Inn Bar & Grill

98 Martin Street Leicester LE4 6EU
T: 0116 266 5123 / paddymarteninn.co.uk

Prince of Punjab Pub & Grill

92-94 Cavendish Road Leicester LE2 7PH
T: 0116 233 6663

Punjabi Tarka

52 Belgrave Road Leicester LE4 5AS
T: 0115 262 7000

Raviolis

46 Welford Road Leicester LE2 7AA
T: 0116 247 0067

Santhi Restaurant

124 Granby Street Leicester LE1 1DL
T: 0116 255 5511 / santhirestaurant.co.uk

Sardar Restaurant

30 Narborough Road Leicester LE3 0BQ
T: 0116 299 3300

Sayonara Thali (v)

49 Belgrave Road Leicester LE4 6AR
T: 0116 266 5888

Sharmilee

71 Belgrave Road Leicester LE4 6AS
T: 0116 266 8471 / sharmilee.co.uk

Shere Punjab

339 St Saviours Road Leicester
T: 0116 273 7811

Shimla Pinks

65-69 London Road Leicester LE2 0PE
T: 0116 247 1471 / 4550.co.uk/shimlapinks

Shivalli (v)

21 Welford Road Leicester LE2 7AD
T: 0116 255 0137 / shivallirestaurant.com

Sizzlers Bar and Grill

188-190 Melton Road Leicester LE4 5EE
T: 0116 266 0738 / sizzlersbarandgrill.co.uk

Spice Bazaar

326 Welford Road Leicester LE2 6EH
T: 0116 270 5110 / spicebazaarleicester.co.uk

Spicenick

189 Fosse Way Leicester LE7 4TF
T: 01664 424 323 / spicenick.co.uk

Sayonara 4 Seasons (v)

49 Belgrave Road Leicester LE4 6AR
T: 0116 266 5888 / sayonara4seasons.com

Tadka Indian Restaurant

205 Catherine Street Leicester LE4 6GE
T: 0116 266 5666

Tangoe Restaurant

80 Gipsy Lane Leicester LE4 6RE
T: 0116-261-0044

Teli's Spicy Haandi

144 Walnut Street Leicester LE2 7GR
T: 0116 255 3031

The Grand Durbur

294 Melton Road Leicester LE4 7PB
T: 0116 266 6099

The Peepul Centre Restaurant

Peepul Centre 317 Orchardson Avenue
Leicester LE4 6DP
T: 0116 261 6045

The Royal Indian

153 Melton Road Leicester LE4 6QS
T: 0116 233 3557 / the-royal-indian.co.uk

Tiranga Restaurant and Bar

119-121 Melton Road Leicester LE4 6QS
T: 0116 261 1002 / tiranga.co.uk

Vishal

347 Catherine Street Leicester LE4 6GG
T: 0116 266 4247 / vishalleicester.com/index.html

World Peace Café (v, vegan)

Nagarjuna Buddhist Centre
17 Guildhall Lane Leicester LE1 5FQ
T: 0116 262 0317 /
meditateinleicester.org/world-peace-cafe/

Wrapchic Eat in/Takeaway Restaurant

49 Gallowtree Gate Leicester LE1 5AD
Tel: 0116 251 8723
W: www.wrapchic.co.uk
Vegan, Vegetarian and None Vegetarian.

Wyvern Restaurant & Sports Bar

Kerrsdale Avenue Rushey Mead Leicester LE4 7GJ
T: 0116 319 1380 /
M: 07377 177773

Paubhaji®

Authentic Indian Cuisine



Specialised in Live Cooking



0116 276 1616
0771 193 5754
0780 886 2868

www.milanevents.co.uk
111 East Park Road Leicester - LE5 4QD

A friendly FAMILY
restaurant. Our chef's will
prepare for you a mouth-
watering range of
regional foods from all
over India



Newly opened

Jaan Cafe & Restaurant

and takeaway
(Free deliveries on
orders over £25)

Bring your own bottle
Veg & non-veg menu

Opening hours

Monday to Sunday. Lunchtime: 11.30am-2.30pm
Eve: Sun-Thurs 5pm-11.30pm & Fri - Sat 5pm-midnight



Outside catering available for all occasions

268/270 Catherine Street, Leicester LE4 6GD

Tel: 0116 2666 499 or 0791 4567 786

W: jaancaferestaurant.co.uk

Apna Punjab Sweet Centre

Diwali Greetings

Specialist in Pure Punjabi (Indian)
Food & Indian Sweets



We also cater for all types of functions:

- Birthdays • Weddings • General Parties
- Waitress Service • Crockery for hire
- Mithai and fruit baskets

65A Purley Road
(off Catherine Street)
Leicester
LE4 6PB

T: 0116 266 6567
M: 07404 606838
E: modhanilesh@hotmail.com
W: apnapunjabsweets.com

Peepul enterprise

RESTAURANT & BAR

WE ALSO CATER FOR WEDDINGS & EVENTS



Diwali Offer
10% off your
food bill when you
present this advert
(Terms and conditions apply)
Valid until 30/11/18

Open Tuesday - Saturday. Call us today to book your table.

Wishing you all a Happy Diwali

Peepul Enterprise, Orchardson Avenue, Leicester LE4 6DP
T: 0116 261 6041 / 0116 261 6000
E: Enquiries@peepulenterprise.com
W: www.peepulenterprise.com

peepulenterprise
@peepulenterprise
@peepul



Neha.
Academy Team Leader

Hastings DIRECT

Great careers in the heart of Leicester

Clearly Hastings Direct

Find out more at

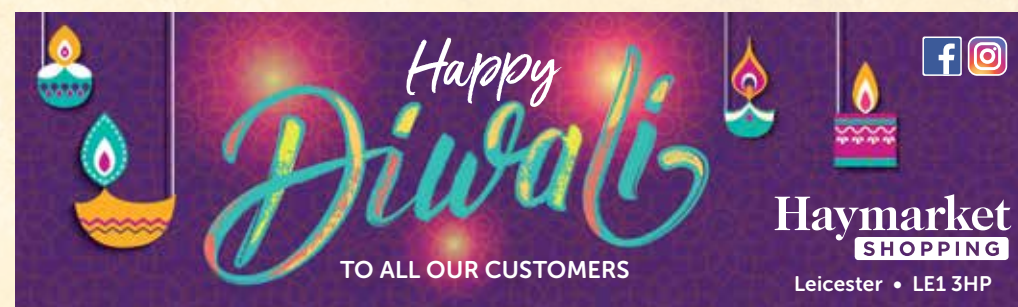
www.hastingsdirectcareers.com

Shopping

Golden Mile

Leicester's famous Golden Mile is just a 10-15 minute walk from the Clock Tower. Along the Belgrave and Melton Roads, The Golden Mile has one of the largest concentrations of Indian clothes and gold jewellery shops (which give the area its name) in the country.

Be dazzled by the fantastic hue of colours and fashion trends and take a break from your shopping in one of the many restaurants and eateries (see the food pages) along the mile. The Golden Mile is also the focus of our Diwali celebrations which attract people from all over the world.



Highcross

The Highcross centre is the heartbeat of the city's shopping scene attracting thousands of shoppers, from high-end retailers from **John Lewis**, **Jo Malone** and **Reiss** to the popular favourites such as **Topshop**, **Next** and **Zara**. Be it **Mango**, **Debenhams**, **River Island**, **USC** and **Superdry** there's something for all styles and tastes. Take a break at one of the large number of cafés and restaurants offering everything from spicy Caribbean at **Turtle Bay** to Italian chic at **Carluccio's**.

Highcross is easily accessible through its main entrances on High Street, or directly from the 2,000 space multi-storey John Lewis carpark or rooftop parking.

W: highcrossleicester.com



Haymarket

The Haymarket Shopping Centre is situated opposite Highcross and has been a feature of the city centre for more than four decades. You will find great brands such as **TK Maxx**, **H&M**, **Primark** and the **Body Shop**. Aside from the big names and national chains, the Haymarket is also home to a number of independent shops where you'll find selections to tempt individual tastes.

W: haymarketshoppingcentre.com

St Martins

Connected to The Lanes, the area offers a mix of unique shopping, food and drink experiences. **The Vintage Scene** provides clothing from 70s though to 90s, **Harriman & Co** for contemporary design and **Crafty Sew & So** is a fabulous sewing emporium and **Beat Route** for vintage and vinyl records.

St Martins is home to the latest additions to the cities food scene with slow cooked meats of **Grillstock**, the South American flavours of **Bodega Cantina** and health food kitchen with a fusion at **KAI**.

These join the spectacular former bank conversions of **Middletons Steakhouse & Grill** and **Delilah's Fine Foods**, winner

of 'Deli of the Year' 2017/2018. Cocktail creations at **33 Cank Street**, coffee at **St Martin's Tea and Coffee Merchants**, fine Italian wines at **Veen** and visit **Gelato Village**, voted best dessert outlet at the Food Awards England 2016.

The Lanes

The Lanes lead you into Leicester's independent heart with a quaint shopping district offering quirky and unique shops. Contemporary country and rustic interiors at **Pomponette** and jewellery, gifts and wooden



toys at **Just...The Fair Trade Shop** or perhaps treat yourself with handmade chocolates at **Cocoa Amore**, The Lanes has plenty to offer. With cafés galore along Loseby Lane spilling out onto its pavements and **The Globe** pub serving fine ales since 1720, it's the perfect place to refresh too!

Market Street

Explore one of Leicester's historic streets, browse for your new ride at **Future Cycles**, fashions at **Fat Face** and the finest jewellery at **Tarratt's** including Rolex, Chanel and Longines. Take time out to enjoy fresh and locally sourced produce at **The Detox Shack**, artisan drinks from **200 Degrees Coffee Shop**, craft beers and cocktails at **Head of Steam** and walk down to the **Knight & Garter** for a boutique range of beers, wines & spirits.



Silver Arcade, Malcolm Arcade and Odeon Arcade

The city's arcades operate as a network of interconnecting thoroughfares peppered with interesting and unique boutiques and shops. **Silver Arcade** is one of just two four-storey Victorian shopping arcades in the country with unique shops such as **Deli Flavour** and handmade doughnuts from **Doughnott**. Nearby are **Odeon Arcade** and **Malcolm Arcade**. Malcolm Arcade is similar to its Silver relation, and is home to an eclectic mix of shops including a haberdashers and **Rockaboom** record shop.

High Street, Humberstone Gate and Gallowtree Gate

In the High Street area, you can relax and unwind at the **Cosy Club**, refresh in the 15th century **Wygston's House**, dine in the beautifully restored, elegant Victorian city pub **King Richard III** or admire the neo-classical décor of **Café Bruxelles**. Enjoy a wide range of shops include **Jellyrolls** kidswear, **Amabis**, selling unique jewellery and gifts and **Wellgosh** offering premium contemporary clothing.

Gallowtree Gate is home to major high street chains, including **Boots**, **Marks & Spencer**, **Dorothy Perkins** and designer fashions at **Cruise and Flannels**. Nearby Humberstone Gate includes shops like **New Look** and the popular jewellery store **Pandora**.

Between shopping you can relax at one of many cafés and restaurants, including **Pret A Manger** in Gallowtree Gate, **Mrs Bridge's Tea Rooms** on The Lanes and **Costa Coffee** at the Clock Tower.





Leicester Market

With over 700 years of history, **Leicester Market** is celebrated for its fruit and vegetables but there's much more to the largest market of its type in Europe. Here you can also pick up cosmetics, flowers, antiques, books, electronics, DVDs, computer games, clothes, cards, toys and fabrics.

But it's the atmosphere of the bustling and vibrant market place that will reward you the most. Enjoy the new **Market Square** and visit the award-winning **Food Hall** for quality food including fresh seafood, meats and cheeses.

Narborough Road and Hinckley Road

Acclaimed as the most diverse street in Britain, **Narborough Road** is a popular student area and an eclectic mix of cultures. Nestled in among the bars and the takeaways are dozens of international supermarkets, selling everything from Polish to Caribbean food, Asian restaurants and curry houses. As for shopping, there are bargains to be had with second-hand furniture, electronics and household appliances.

Clarendon Park and Queens Road

Near to Victoria Park and the University of Leicester, **Clarendon Park** offers tranquil, Victorian streets with beautiful shops and boutiques, art galleries, record shops, bookshops, gift shops, restaurants, cafés, bars, beauty salons and spas; all creating a wonderful shopping experience. For foodies visit **Christopher James Deli**, **Bar Dos Hermanos**, **Halycon Kitchen** and **Salvador Deli**. Buy shoes and coffee at **Northern Cobbler** and hunt for bargains at **Leicester Antique Warehouse** on Welford Road. Queens Road and Clarendon Park Road are beloved by students and professionals who live in this charming neighbourhood.

Francis Street and Allandale Road

For a bit of boutique revelry, visit Francis Street and Allandale Road. This area in Stonegate has high-end gifts galore and quaint coffee shops and bistros to help you unwind. For designer fashion visit **Browns Lingerie** or **Tin Fish Shoes** and for eclectic pieces for the home try **Powder Blue**. You can be pampered at **Bellissimo Beauty** or **Beau Asthetica**, while gadget lovers will enjoy browsing **Stewart's Watches** or **Bang & Olufsen**. Refresh at the **The Real Ale Classroom** and **The Toast Inn** and dine at **Timo's Italian**.

Staying in the City

Whether coming to Leicester for a day, weekend or longer, the city has a range of accommodation and an exciting array of places to enjoy alongside your Diwali experience.

Inhabited for over 2,000 years, Leicester truly is the beating heart of England. Built on the site of two millennia of history, Romans, Saxons, Tudors and Victorians among others have all left their mark, helping to weave the rich historical tapestry of the city.

Nowadays, the regenerated city centre is vibrant and thriving with everything from fine art to fine dining, world class theatre to elite sport and experiences from as far afield as the Indian subcontinent and even outer space!

Leicester City Football Club's home, the **King Power Stadium**, hosts stadium tours, giving football fans the opportunity to go behind the scenes. Enjoy VIP access to areas normally reserved for players, officials and staff. You'll see the media suite, an executive box, home and away changing rooms, the dugout areas and finally walk out of the King Power Stadium tunnel.

Sports fans are spoilt for choice in Leicester; alongside the Fearless Foxes, the formidable **Leicester Tigers** continue from strength to strength as the best supported and most successful club in English rugby. The **Leicester Riders**, British Basketball League champions and the oldest professional club in British basketball continue their success in their new home in Leicester Arena.





WOLSEY ISLAND

An exciting development of 2, 3 & 4 bedroom homes

Offering waterfront living with the convenience of the city.

New show home now open
The Corah, a beautiful 3 bedroom home with flexible living to suit your lifestyle

Buy your new home with just a 5% deposit*

Tel no: 0330 058 0911 Open daily 10am to 5pm

Wolsey Island Abbey Meadows,
off Abbey Park Road, Leicestershire LE4 5DF

Happy Diwali
From all at **Westleigh**

westleigh.co.uk

*Subject to Help to Buy scheme rules. Mortgage offer is subject to application and status. Full details of the mortgage product are available through an independent mortgage adviser.

And it's not just the sporting theatres that are grabbing the headlines in this city. The ground-breaking architectural masterpiece **Curve Theatre** provides engaging first-class theatrical experiences from world premieres to its own sell-out Curve productions. Meanwhile **De Montfort Hall**, Leicester's largest entertainment venue, has been serving the city with quality live acts since 1913.



If revolutionary theatre fails to transport you to another world, perhaps the **National Space Centre** can provide an out-of-this world experience. The striking rocket tower, interactive galleries and the UK's largest planetarium will satisfy even the most imaginative interstellar curiosities.

The 2012 unearthing and identification of the remains of King Richard III in a council car park has sparked a revival of interest in the city's heritage, including a new visitor centre on the site of the world-renowned discovery. Named as one of Lonely Planet's 'hottest' attractions in the world for 2015, the **King Richard III Visitor Centre** has been created around the poignant place where King Richard III's remains were buried for more than half a millennium – one of the most fascinating and intriguing historic sites in England and only a few paces from where the king's final resting place can be found in **Leicester Cathedral**.

The family favourite **New Walk Museum & Art Gallery** is named after the tranquil, tree-lined promenade on which it is located. You'll be welcomed by the enormous Rutland dinosaur which dominates the fascinating dinosaur gallery. The museum houses the largest collection of German Expressionist artwork in the UK and Picasso Ceramics works from the unique collection of Lord and Lady Attenborough. You can also discover the new Ancient Egyptian Galleries (opening 20 October) showcasing the most significant collection of Ancient Egyptian artefacts in the East Midlands.




Diwali Greetings

Best wishes to everyone celebrating Diwali in Leicester & Leicestershire

Rory Palmer
Member of the European Parliament for Leicester & Leicestershire

@RoryPalmerMEP
@Rory.Palmer



Hotel Accommodation

For those travellers on a budget there's the **Ramada Encore**, conveniently situated near **Curve** in the Cultural Quarter or if you're looking for a little more luxury, there's the newly refurbished **Mercure Leicester**, **The Grand Hotel** on Granby Street that offers four star accommodation and a unique food and drink experience at **Marco Pierre White** restaurant.

The award winning **Maiyango Hotel and Restaurant** offers a boutique hotel experience in the heart of the city. **The Fish & The Chip** restaurant serves the nation's favourite comfort food, playful cocktails and craft beer and once you've had enough to eat and drink, the luxurious hotel rooms offer a perfect place for rest and recuperation before you resume your city adventure.

Situated on the tree lined New Walk, approximately five minutes' walk from the railway station, is **The Belmont Hotel**. This family owned, town house hotel is a unique retreat in the city centre. With family and luxury rooms, the Belmont is ideal for visitors looking for a warm and personal welcome. The city also has a number of well-known hotel brands including the **Ibis**, **Premier Inn** and **Travelodge** as well as the **Holiday Inn** which is perfectly located for visitors to the new King Richard III Visitor Centre and has leisure and spa facilities as well as convenient parking.

Further out of the city centre at junction 21 of the M1 is the 4 star **Marriott Hotel** with excellent dining and leisure facilities on site and the **Hilton** which offers a good range of family rooms as well as leisure facilities.



Birmingham to Delhi

The perfect connection for Diwali

Celebrate the new beginnings of Diwali with Air India's direct flights to Delhi and Amritsar. You can also fly to India with Emirates, Qatar Airways, Lufthansa and Turkish Airlines. Whether you're visiting loved ones or simply want to experience India, start your adventure at Birmingham Airport.

birminghamairport.co.uk



Here for your journey



ALL OUR JOURNEYS ARE NOW
FIXED FARE
No Surges. No Meters.

Download our new app now
just scan the QR code.

DIWALI GREETINGS

www.swiftfoxcabs.co.uk

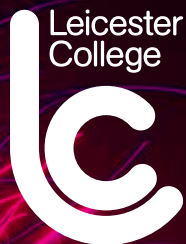
*except for the festive season

SWIFT FOX CABS
CELEBRATING 50 YEARS IN LEICESTER

- Track vehicle en route.
- See vehicle availability before you book.
- Cheaper than the black cabs.

Available on the App Store
and on Google play

0116 **26 28 222**
DRIVERS WANTED - CONTACT THE OFFICE



HAPPY DIWALI

COME TO OUR OPEN DAY ON:

SATURDAY 24 NOVEMBER 2018, 11AM TO 3PM

**BE A
PART
OF IT!**



#LCOpenDay

To register visit
leicestercollege.ac.uk



Festive Fun at Jubilee Square

There's plenty of festive fun for the family at Jubilee Square with the return of the ice rink and Christmas Wheel of Light. This year the Jubilee Square Ice Rink returns between **6 December** and **6 January** at twice the size allowing plenty of room for family and friends to show off their moves on real ice in the

covered marquee. And if you miss the chance to ride the Wheel of Light during Diwali or if you'd just love a second go then you're in luck, the 110-foot Ferris wheel is moved to Jubilee Square for Christmas from **16 November** until **7 January** providing a whole new perspective of the city. Find out lots more to see and do over the festive period at **visitleicester.info**.



Happy Diwali From Gateway College
Open Day Sat 3rd Nov 10am-1pm
Open Evening Tues 27th Nov 5pm-7pm



Colin Grundy Drive, Leicester, LE5 1GA
0116 274 4500 www.gateway.ac.uk

COSTCO
WHOLESALE

SHOP SMART. SHOP COSTCO.

To find out if you qualify for membership, please contact the Membership Team at Costco Leicester. Call 0116 269 0730.



**JOIN WITH THIS ADVERT AND RECEIVE A
£20 VOUCHER TO SPEND ONLINE***

† Sign up for membership with this advert at our Leicester Warehouse before 01/12/18 and receive a £20 voucher to spend online at www.costco.co.uk. New members only. * Membership Criteria applies. Please call for details. Membership must be obtained before purchases can be made. JN18547.

Road Closures

Diwali Switch On Ceremony and Diwali Day Sunday 28 October and Wednesday 7 November

On Sunday 28 October, the following will happen:

Phase 1

Belgrave Road will be partially closed between Belgrave Circle and Garfield Street from 10am to enable the stage to be set up. Vehicles will still be able to access the rest of Belgrave Road from the Melton Road/ Loughborough Road end until 5pm. Please be aware this will cause delays for vehicles getting into and exiting the area.

Phase 2

A full closure of Belgrave Road and the junctions with its side roads will be in place from 5pm until approx. 9.30pm, during which time vehicles will not have any access.

On Wednesday 7 November, the following will happen:

A full closure of Belgrave Road and the junctions with its side roads will be in place from 5.30pm until approx. 9.30pm, during which time vehicles will not have any access.

Please note that on both dates the Emergency Services and Leicester City Council will need to maintain two clear routes through the Belgrave area for emergency vehicles. The routes are: Loughborough Road, Holden Street, Ross Walk, MacDonald Road, Hildyard Road, Marjorie Street, Abbey Park Street, Harrison Road, Surrey Street, Doncaster Road, Cossington Street, Rothley Street, Rendell Road and Portsmouth Road. Any vehicles parked on these roads, which will

be marked on both sides with 'No Waiting' cones, between 6am and 10pm on Sunday 28 October and Wednesday 7 November will be ticketed and towed away.

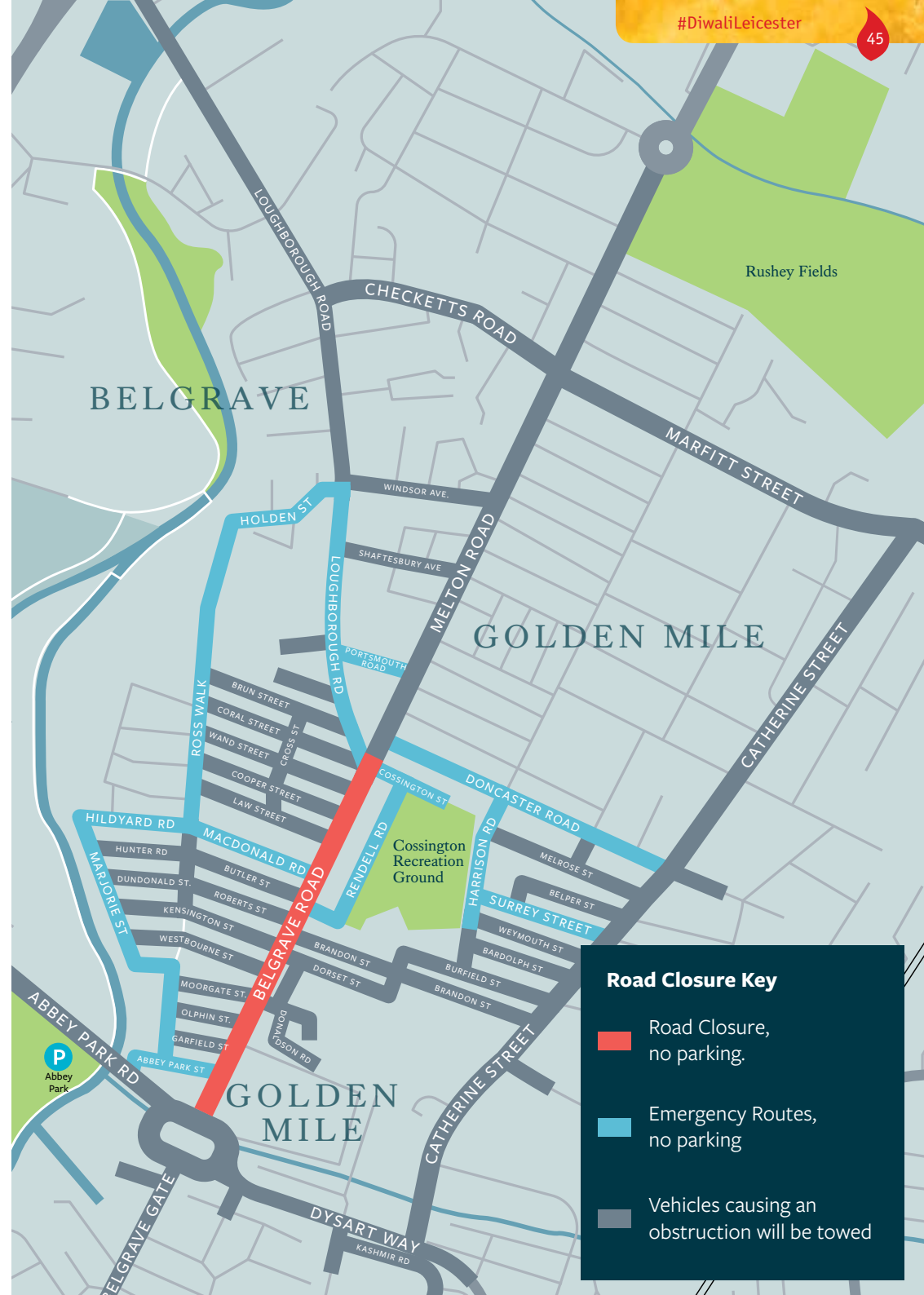
In addition, any vehicle causing an obstruction on any road in the Belgrave Area will also be ticketed and towed away. Any vehicle parked in contravention of a parking restriction, temporary parking restriction, causing obstruction or dangerously parked will be issued with a Penalty Charge Notice and will be towed away to a secure compound.

You will also incur costs for the vehicle being towed to the recovery company. It is important that you adhere to signs, lines and cones in place for this event to avoid any penalties.

Health and safety

In the interests of public safety, members of the public are asked not to bring fireworks to the celebrations. The use of fireworks in a public area will not be tolerated and will be reported to the police.

Leicestershire Police and Leicestershire Fire & Rescue Services will have mobile awareness units at this year's events, highlighting the importance of safety during the festive period. The units will be at the Diwali Village on Cossington Street Recreation Ground for the public to pop along to. We would like to thank Leicestershire Fire & Rescue Service and Leicestershire Police for their continued support of the Diwali celebrations. For further information visit celebratesafely.com



Road Closure Key

- Road Closure, no parking.
- Emergency Routes, no parking
- Vehicles causing an obstruction will be towed

Samworth Brothers

QUALITY FOODS



HAPPY DIWALI



Samworth Brothers
wishes a
Happy Diwali,
peace and prosperity
to all its staff
and friends in
Leicestershire

Samworth Brothers is a privately owned family business and one of the UK's leading food suppliers. Quality is a way of life and integral to everything we do. We're committed to our people and communities, excellence in customer service, food provenance and integrity and the reinvestment in our business for the long term.

Our companies in Leicestershire include Bradgate Bakery, Walker & Son, Walkers Deli & Sausage Co, Saladworks, Blueberry Foods, Melton Foods, Kettleby Foods, Brooksby Foods, Dickinson & Morris and Samworth Brothers Supply Chain.

www.samworthbrothers.co.uk



Happy Diwali to all our customers



PEPSICO

Travel into Leicester

Park & Ride

Back by popular demand, the Diwali Park & Ride service will be operating for both the Switch On and Diwali Day. This will run from the Birstall Park & Ride site, located at LE4 4NN.

For Diwali Switch On, Sunday 28 October, services will run from Birstall Park & Ride site to Abbey Park Road from 4pm until 7pm. Return journeys will run from Abbey Park Road starting at 8.15pm, and the last bus will leave at 10pm.

On Diwali Day, Wednesday 7 November, services will run from Birstall Park & Ride site to Abbey Park Road from 4pm until 8pm. Return journeys will run from Abbey Park Road starting at 8.30pm, and the last bus will leave at 10pm.

The cost will be £4 per person for a return journey or £6 for a group of up to 5 people travelling in a car together. The cost for concessionary pass holders is £1 for a return journey. Park & Ride Season Tickets will not be valid.

For more information about travelling by bus, contact Traveline 0871 200 2233 or traveline.info For National Rail enquiries, telephone 08457 484 950. Further information about travelling to Leicester is at visitleicester.info

Car parking

Car parking spaces in and around the area will be limited during the event; therefore visitors are positively encouraged to use public transport to travel to and from the city centre. There will be limited spaces available for blue badge holders on a first come first served basis in the B&M car park access from Belgrave Circle.

A 24-hour NCP car park is situated in Abbey Street, which is approximately a three minute walk from bus stops and approximately a 15 minute walk from the event. 24-hour parking is also available at the Haymarket Centre, and also at Lee Circle, which are approximately a 15 minute walk from the event.

There are other car parks a little further out from the ones mentioned, these are: Phoenix Square, Dover Street and Newarke Street.

Choose how you move

For the most up to date information on public transport, walking and cycling routes and car shares, please visit choosehowyoumove.co.uk Temporary bike park on site.

Bus services

The bus services below are those that will travel, or have stops near to, Belgrave Road.

2	(Kinchbus)	Loughborough	Departs St Margaret's Bus Station	Stand SF
5/5A	(Arriva)	East Goscote/Melton	Departs Haymarket Bus Station	Stand HQ
6	(Arriva)	Syston	Departs Haymarket Bus Station	Stand HP
25	(First)	Beaumont Leys	Departs Haymarket Bus Station	Stand HT
26	(First)	Beaumont Leys	Departs Haymarket Bus Station	Stand HV
54	(First)	Beaumont Leys	Departs Haymarket Bus Station	Stand HY
126/7	(Arriva)	Shepshed/Loughborough	Departs St Margaret's Bus Station	Stand SH

Bus Diversions

When Belgrave Road is closed to traffic bus services will divert as follows:

Services to **21**, **22** to Rushey Mead, **6** to Thurmaston and **5**, **5A** to Melton will use Marfitt Street and Catherine Street.

Services to **25/6** to Beaumont Leys/Mowmacre Hill and **2** & **126** to Loughborough will use Abbey Lane.

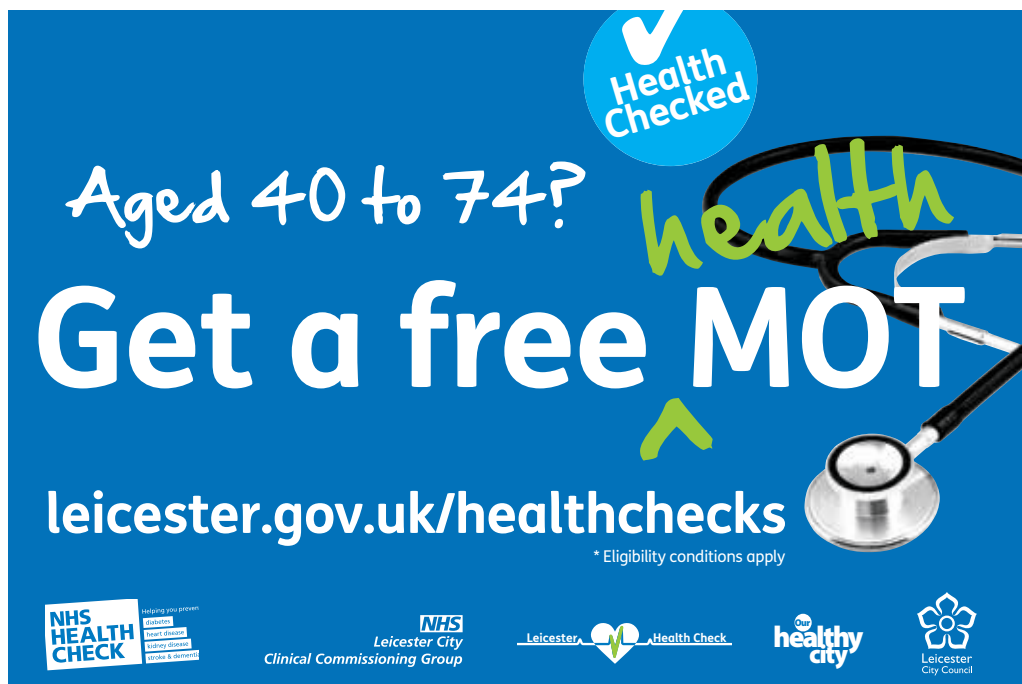
The nearest point that buses will be able to access Belgrave Road are Belgrave Roundabout and Melton Road at Marfitt Street.



Diwali Park & Ride

Extra services running between Birstall and Abbey Park Road from 4pm on 28th October and 7th November 2018.





Aged 40 to 74?

Health Checked

health

Get a free MOT

leicester.gov.uk/healthchecks

* Eligibility conditions apply

NHS HEALTH CHECK

Helping you prevent:
Diabetes
Heart disease
Kidney disease
Stroke & dementia

NHS
Leicester City
Clinical Commissioning Group

Leicester Health Check

healthy city

Leicester City Council

Your **free** NHS Health Check is the perfect way to make sure that you are in good health, think of it like an MOT for your body – designed to keep you ticking over for longer.

What is a Health Check?

The NHS Health Check works out your risk for stroke, kidney disease, heart disease, type 2 diabetes or dementia. Once you have these results your GP practice will go through them with you and, through healthy lifestyle tweaks, you can reduce your risk and live a healthier life, for longer.

Why do I need a Health Check?

As you get older, you naturally have a higher risk of developing one of these conditions, all of which can negatively impact on your quality of life; this is why we offer the NHS Health Check to adults (aged 40-74) free of charge at your GP surgery.

How do I get a Health Check?

If you are aged between 40-74 without an existing condition, you can expect an invitation from your GP offering you a free NHS Health Check. The NHS Health Check should be done every 5 years to keep you in the best health possible.

How can I reduce my risk of these conditions?

Once you've had your NHS Health Check, your practice will go through your results with you. You'll be given advice to help you lower your risk of a stroke, kidney disease, heart disease, diabetes or dementia, and maintain or improve your health. But you don't have to wait until then to make healthy changes: increasing your activity levels, eating more fruit and veg, giving up smoking and losing weight, if you need to, are all great ways of reducing your risk and improving your health.

happy diwali



eastmidlandsairport.com



For more information visit leicester.gov.uk/healthchecks



THE COSMOGRAPH DAYTONA

Rooted in the history of motor sport and watchmaking,
the legendary chronograph that was born to race.
It doesn't just tell time. It tells history.



OYSTER PERPETUAL COSMOGRAPH DAYTONA



23-25 MARKET STREET, LEICESTER. LE1 6DN

0116 255 4434 | enquiries@tarratt.co.uk | www.tarratt.co.uk

WATCH FEATURED SUBJECT TO STOCK AVAILABILITY